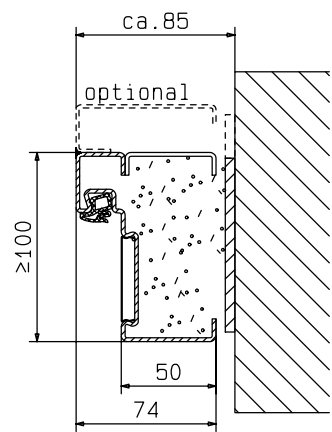
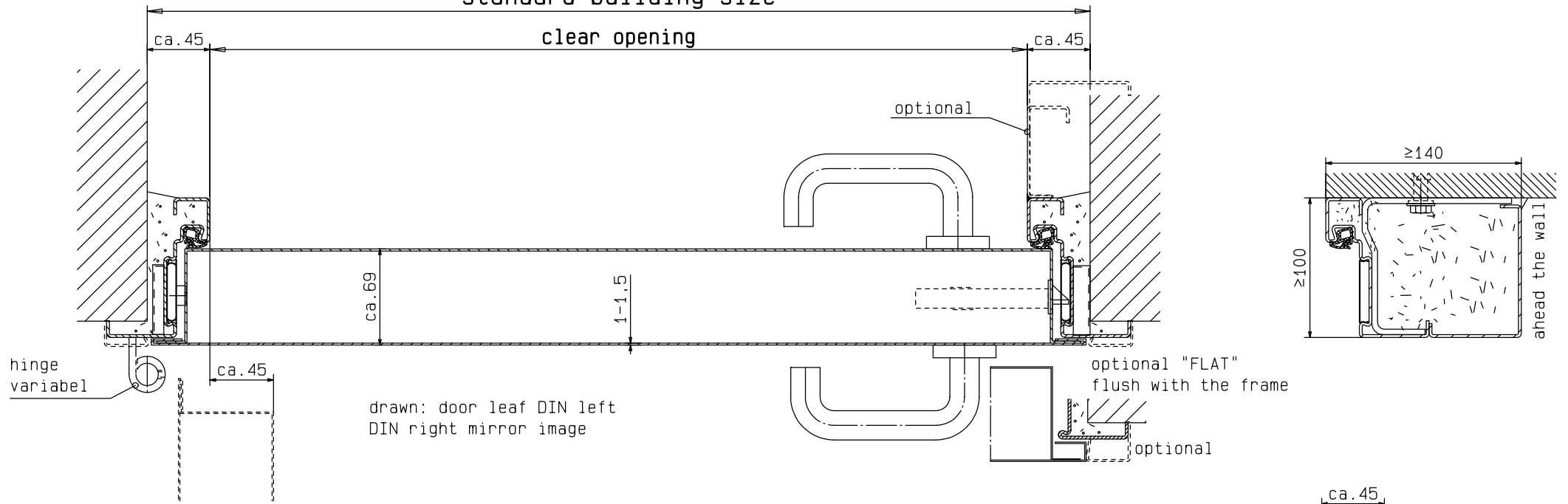
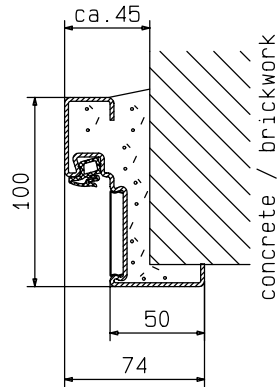


standard building size

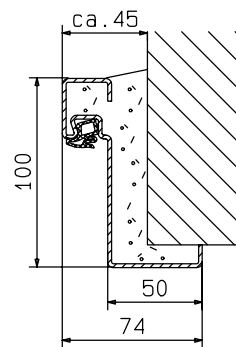
clear opening



main frame "ZNG 68/76"

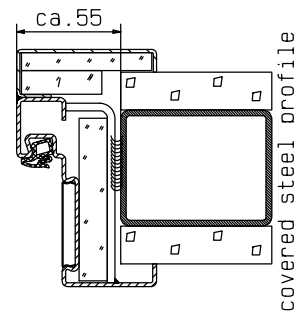


optional frame "ZNG 58/76"

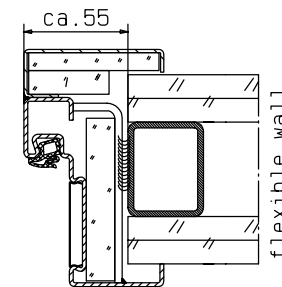


optional frame "ZG 68/76"

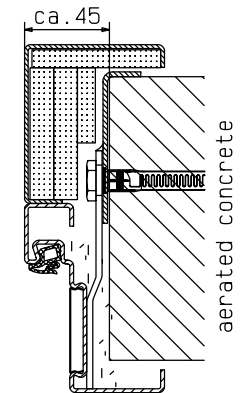
(limited measuring range)



covered steel profile



flexible wall



aerated concrete

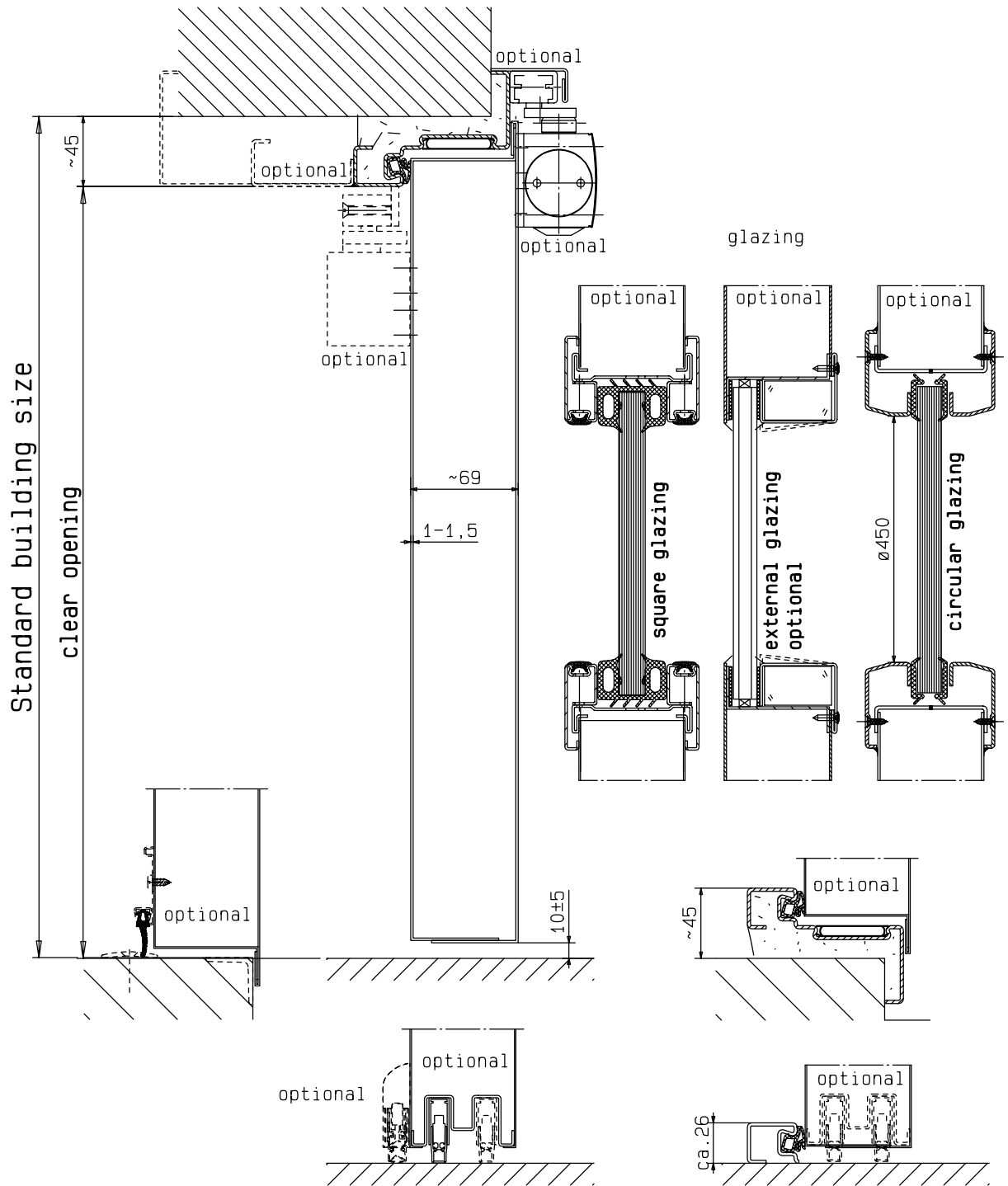
detail of glazing  
see at vertical cross-section

01.07.2020

**System Schröders**  
Innovation Tür und Tor

Gerhard-Welter-Straße 7; D-41812 Erkelenz

**single leaf steel fire door**  
**EI230/E30/EW30-C5-S2(S200)**  
**"System Schröders TSN-1"**  
horizontal cross-section



Also deliverable as an external door  
 CE-marked according to EN 14351-1

details of fitting or frame  
 see at horizontal cross-section

**System Schröders**  
 Innovation Tür und Tor

Gerhard-Welter-Straße 7; D-41812 Erkelenz

**single leaf steel fire door**  
**EI<sub>230</sub>/E30/EW30-C5-S<sub>a</sub>(S<sub>200</sub>)**  
**"System Schröders TSN-1"**  
 vertical cross-section